



Graduate Outcomes Presentation

August 28, 2019

EQUIFAX®

Emsi



OKLAHOMA STATE REGENTS
FOR HIGHER EDUCATION



Equifax Team

Your Equifax Graduate Outcomes and Emsi Partnership



Ashley Dye
Client Director,
Workforce Analytics



Jeff Taylor
VP, Workforce
Analytics



Bob Hieronymus
Emsi VP for
Partnerships



Meeting Agenda



Discussion

- Introductions
- Current Challenges

10 Minutes

- ▶ Ashley Dye



Demonstration

- Equifax Services
- Emsi Services
- Sample Reports / Case Study

40 Minutes

- ▶ Jeff Taylor
- ▶ Bob Hieronymus



Next Steps

- Delivery
- Q&A

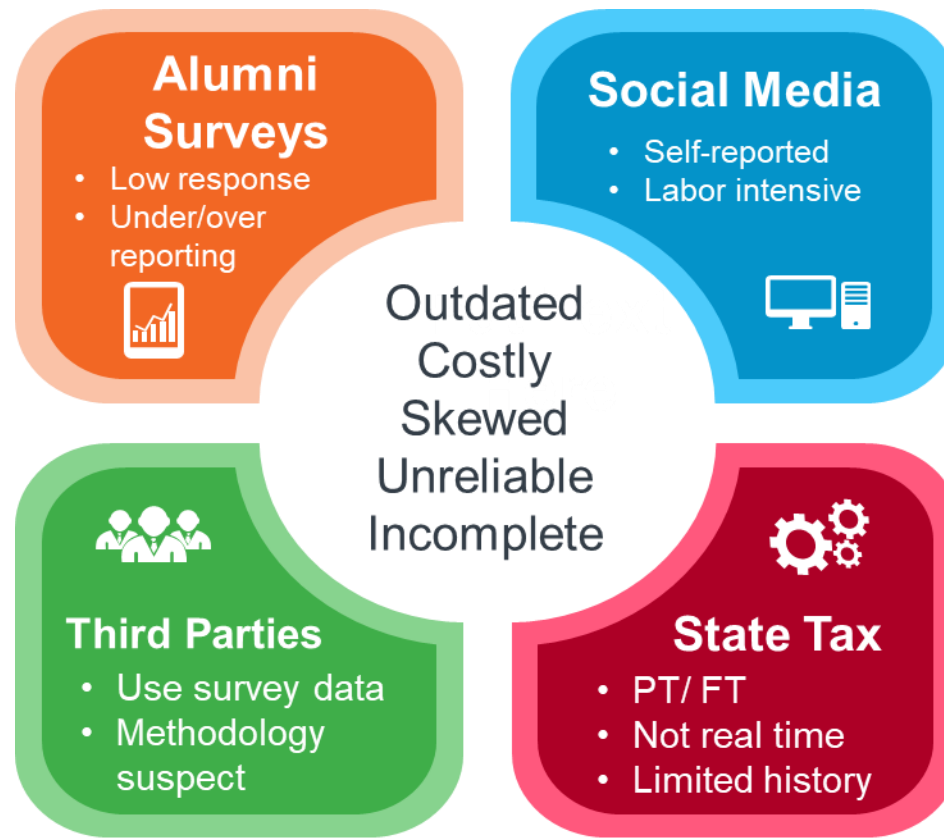
10 Minutes

- ▶ All



Data Challenges

Traditional Graduate Data Sources



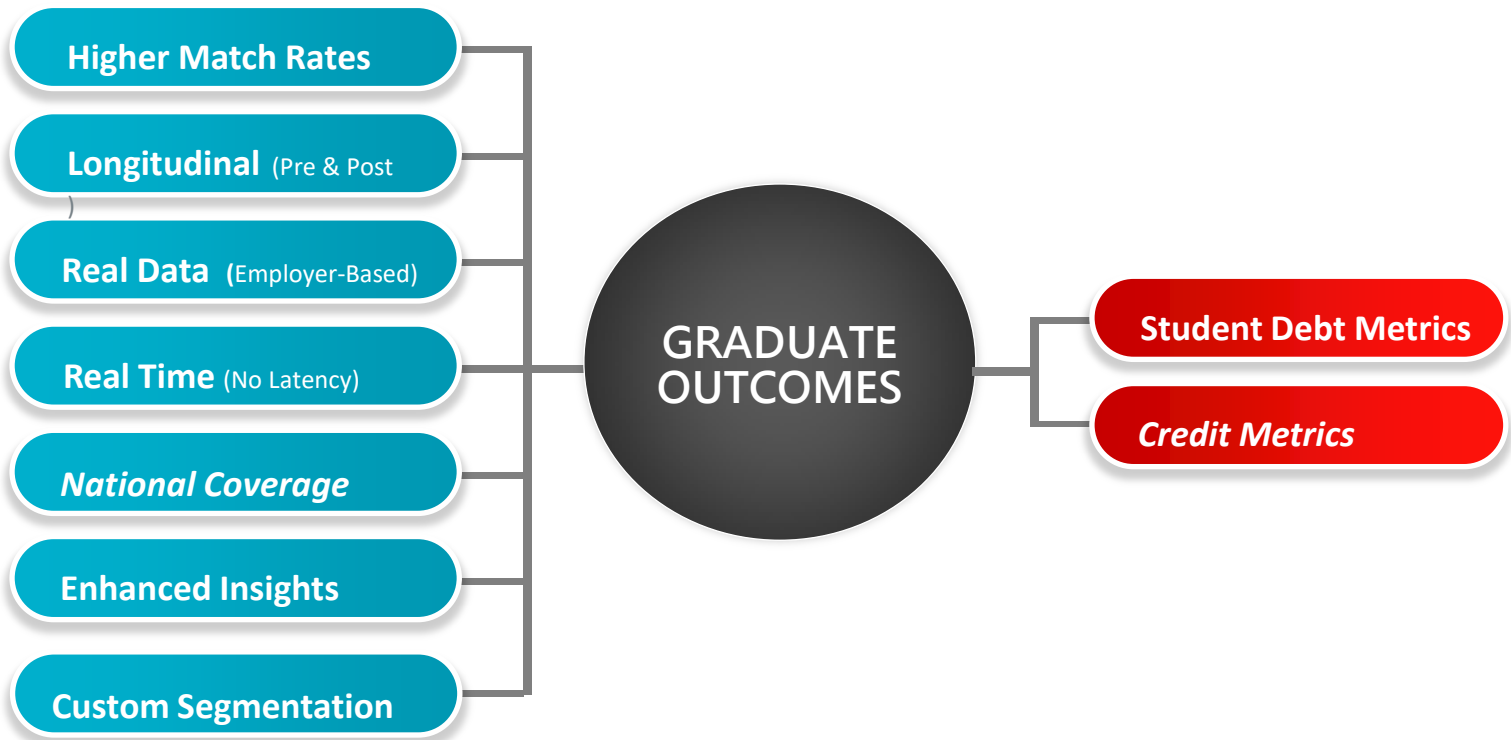


Why Equifax

The Data Advantage



The Data Advantage



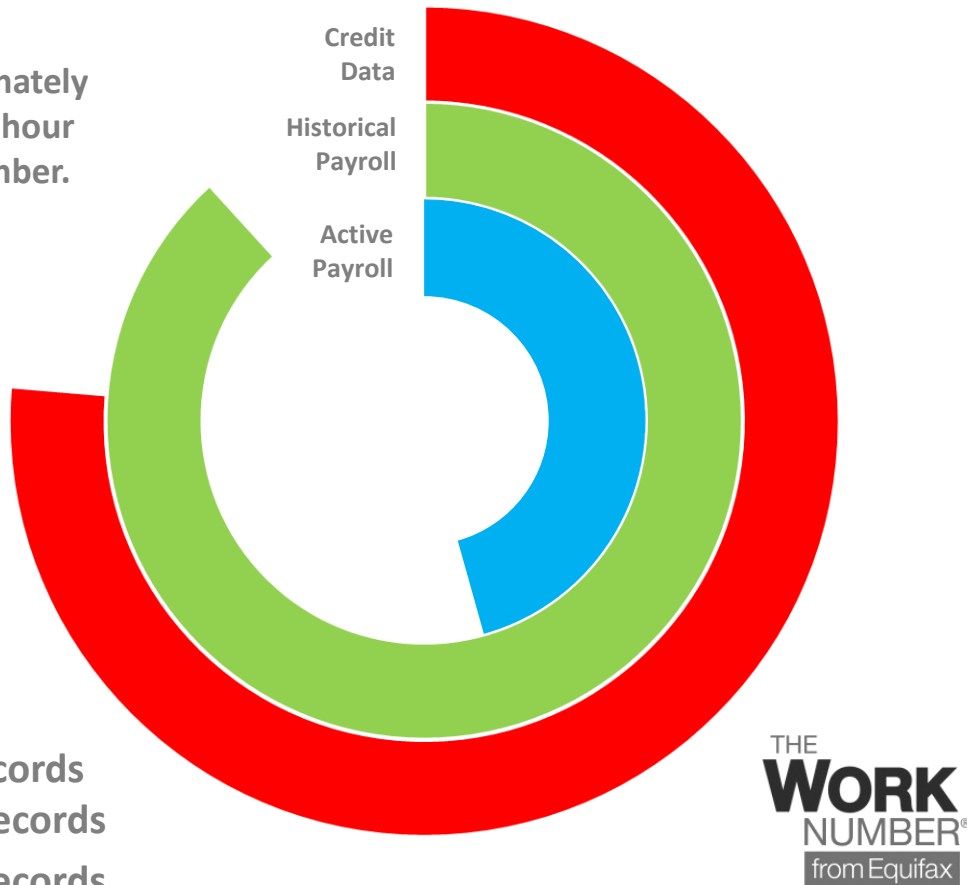
Equifax maintains the largest repository of current and historical payroll data in the United States.



The Work Number® Insights

Fast Fact:

We add approximately
7 companies per hour
to The Work Number.



Our Data



358M
Payroll Files



40%
of U.S.
Workforce



85%
of the
FORTUNE 500



93%
Government
Employees



UPDATED
When Payroll is
Processed



NATIONAL
Coverage



29,500
Employer
Contributors



Graduate Data Services

1. Graduate Outcomes Metrics

Cohort level access

- Report Based Delivery, aggregate level, FERPA compliant
- Aggregated / Anonymized

2. Graduate Verifications

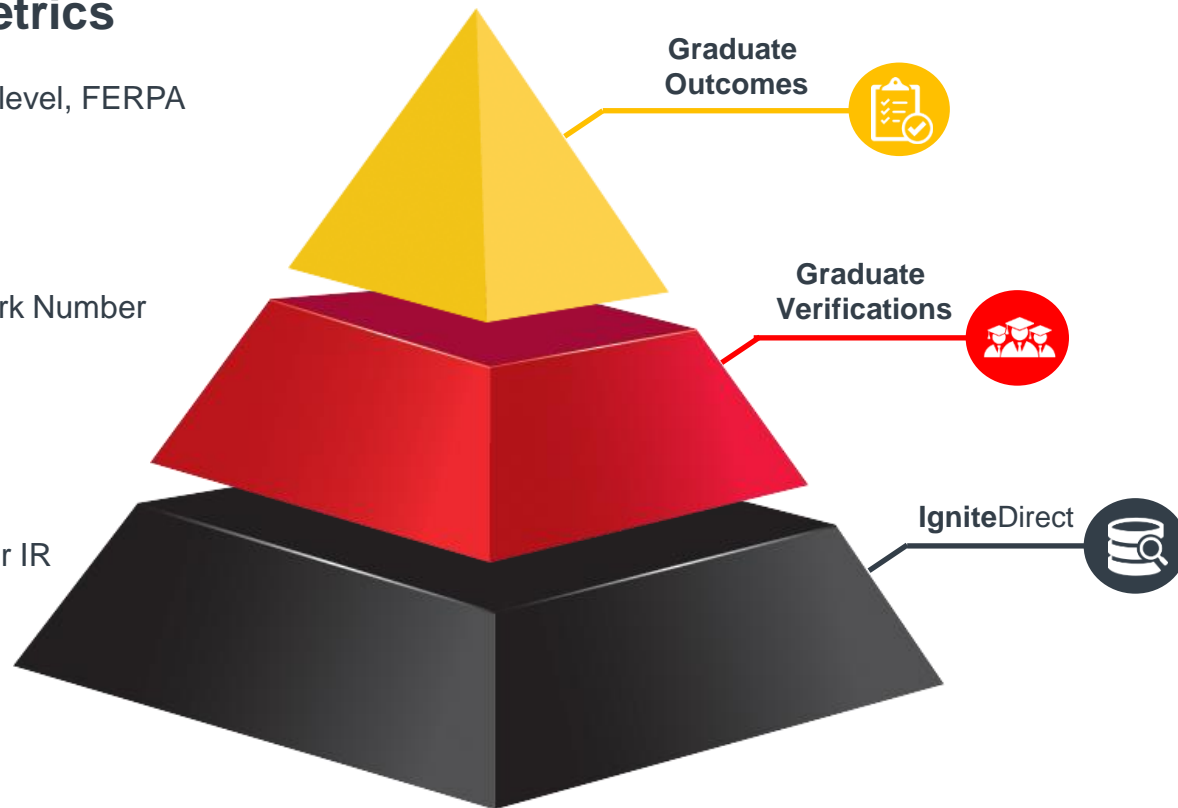
Individual level access using The Work Number verifications service

- One-off / batch level inquiry
- Requires individual consent

3. IgniteDirect

Custom level access through Ignite for IR projects or graduate level studies

- Record level, tokenized
- Can be conjoined with other data sets
- Can use client based data tools (Python, R, SAS, etc.)





Graduate Outcomes Metrics

Product Suite

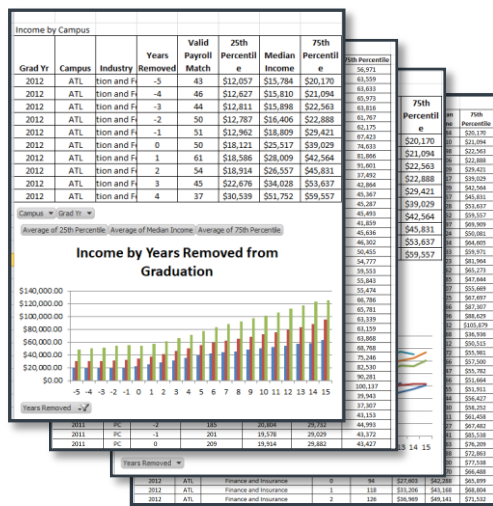


Core

Pro

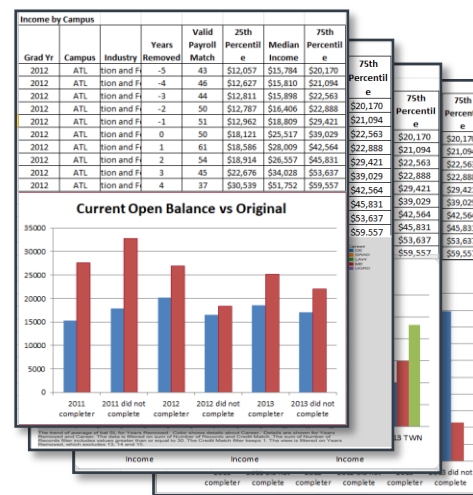
Income Based Reports

- Income
- Industry / Geography (Grad Year, Campus, Degree, College & Program)



Debt / Credit Based Reports

- Includes All Core Reports
 - Debt
 - Credit Data
- (Student Debt, Credit Score, Trade Lines & more)

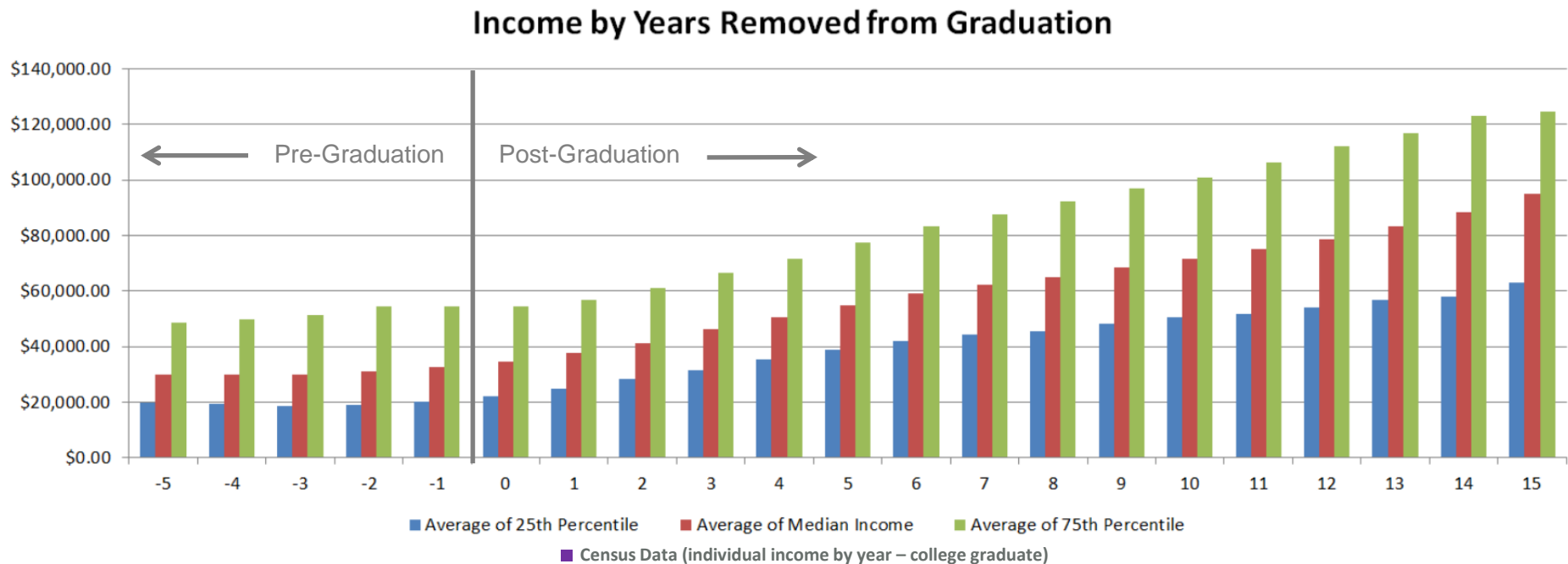


Plus (Custom Attributes)



Core

Income by Years Removed



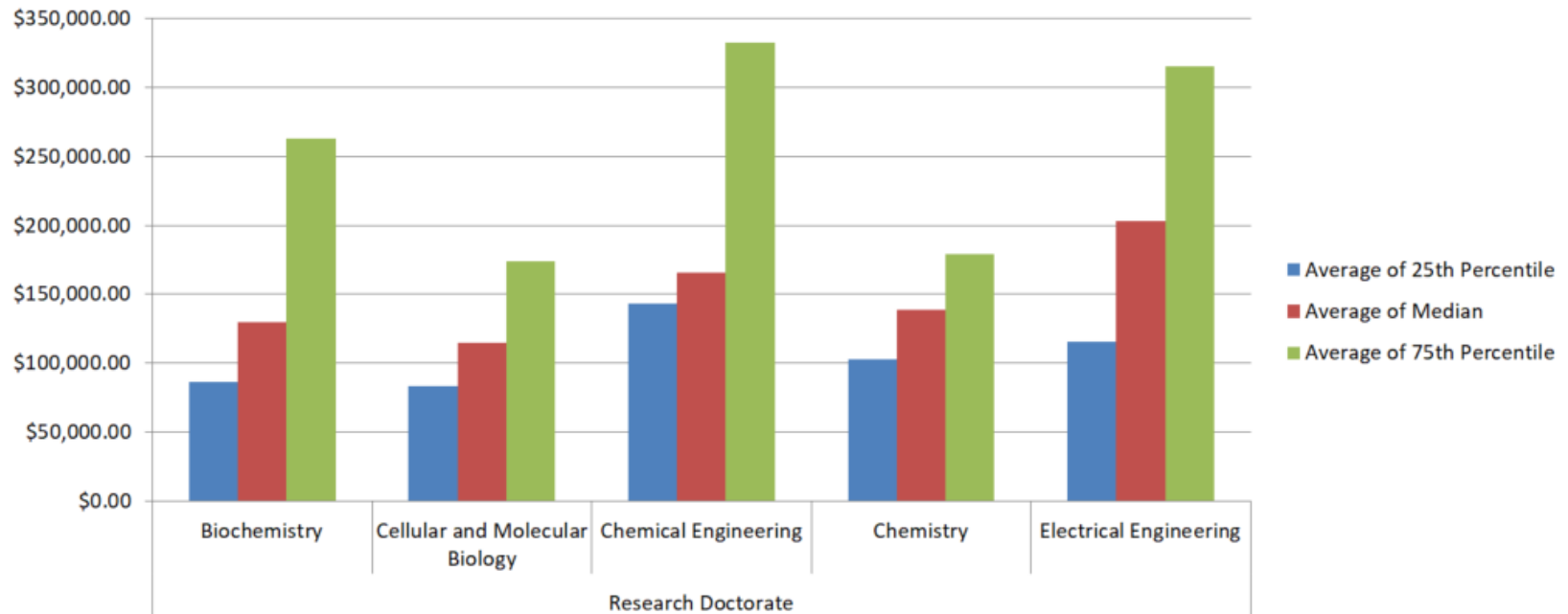
Key Insights:

- Average Income over 15 years rises \$63,000 (Avg. Increase of \$4,200 per year)
- They start to exceed national average for college graduates at 6 year mark (Source: U.S. Census)
- 75% percentile reaches 100K in earnings at ten year mark.



Core

Income by Degree Level & Program



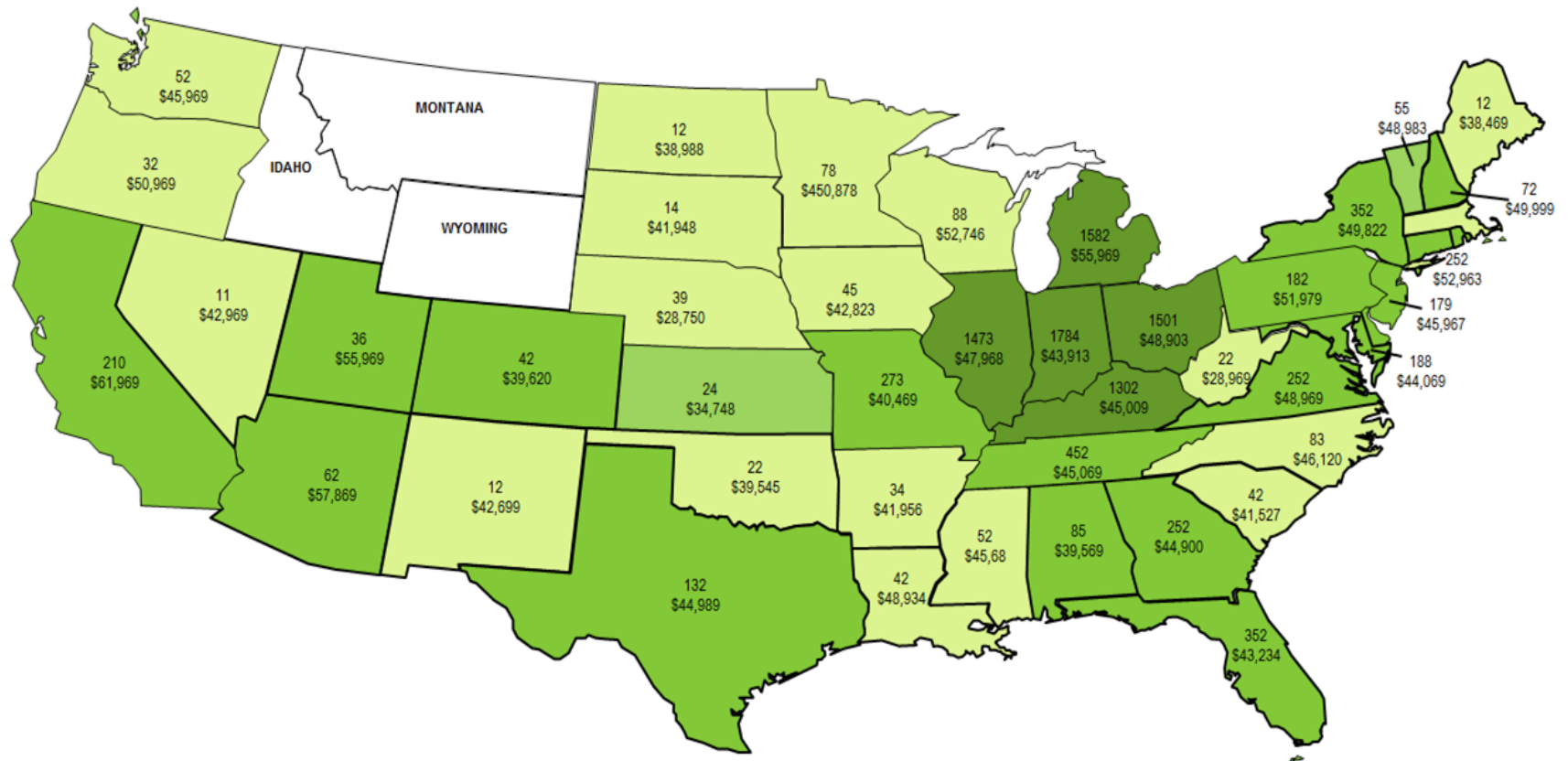
Key Insights:

- Electrical Engineering grads are being paid the highest median incomes (\$202,000) 10 years post graduation.
- Some graduates from the Chemical Engineering Doctorate Program (75th percentile) are earning \$332,000 per year 10 years post graduation.



Core

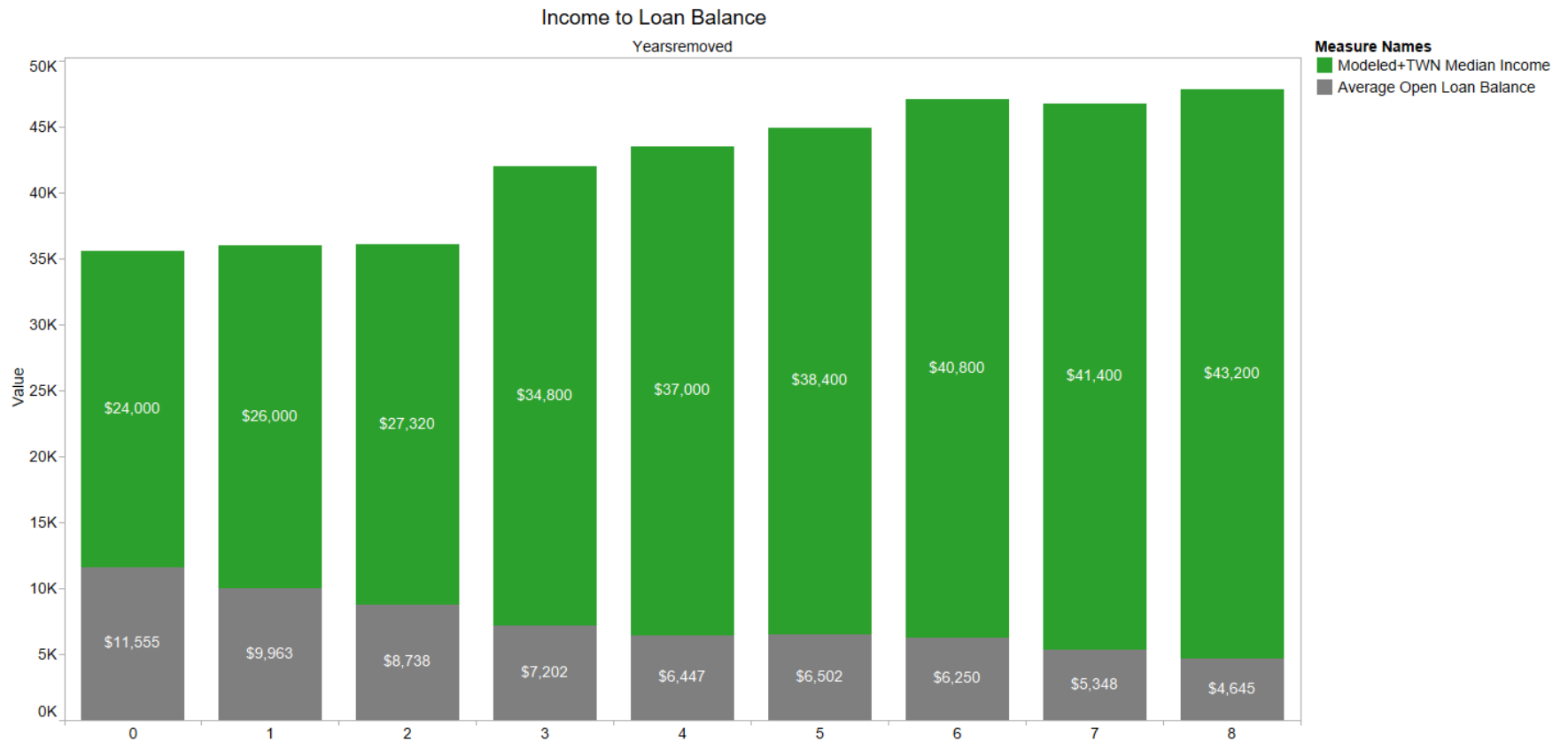
Geography – Heat Map





Debt

Income vs. Student Loan Balance



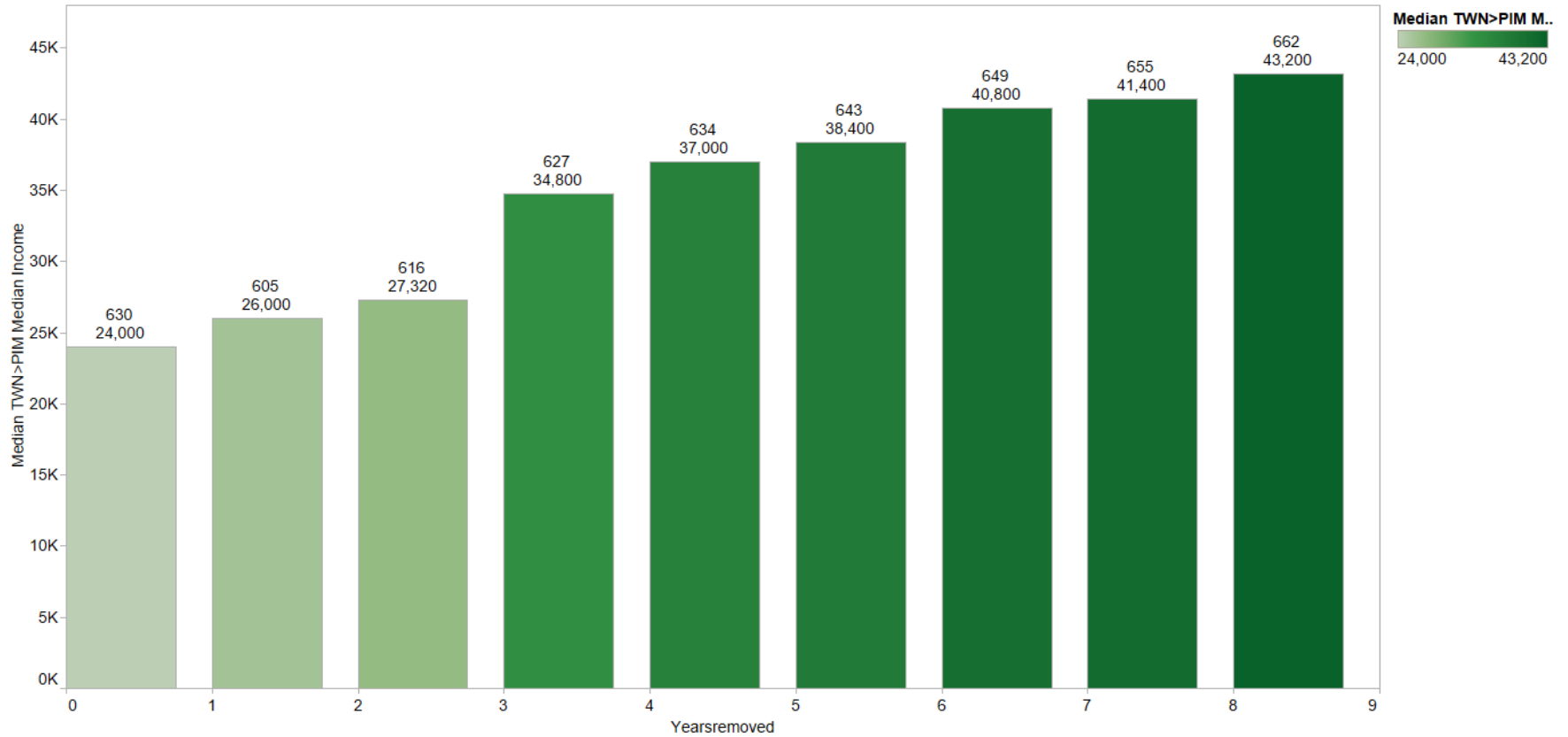
Modeled+TWN Median Income and Average Open Loan Balance for each Yearsremoved. Color shows details about Modeled+TWN Median Income and Average Open Loan Balance.



Debt

Credit Score

Income to Vantage Score

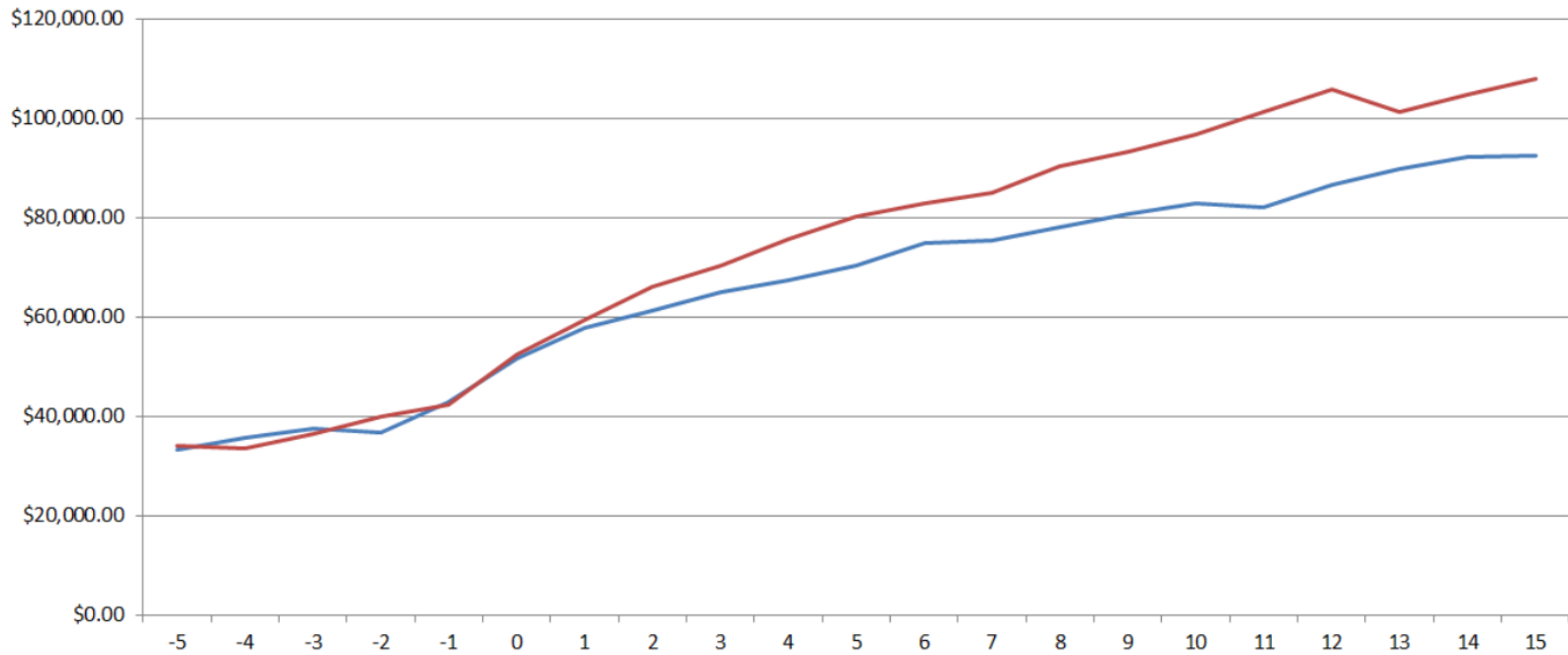




Plus

Verified Income by Gender

Average Median Income By Gender and Years Removed from Graduation

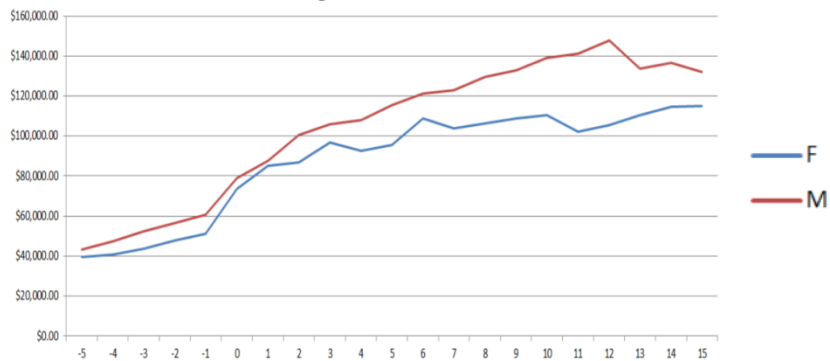




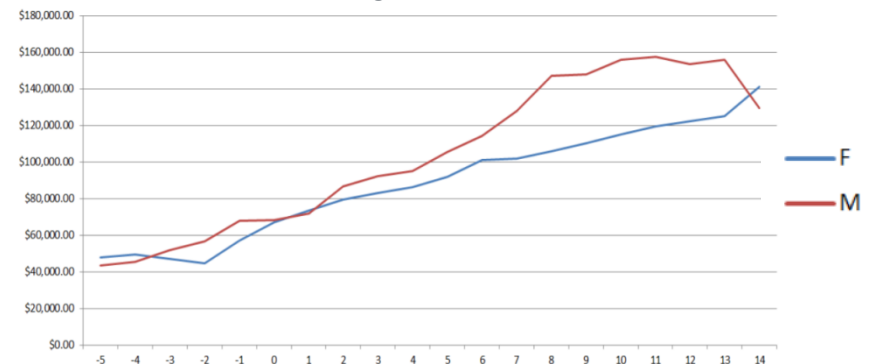
Plus

Income by Gender by College

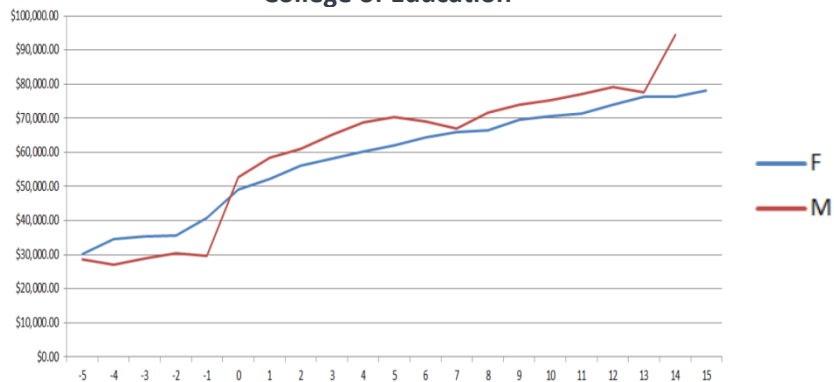
College of Business



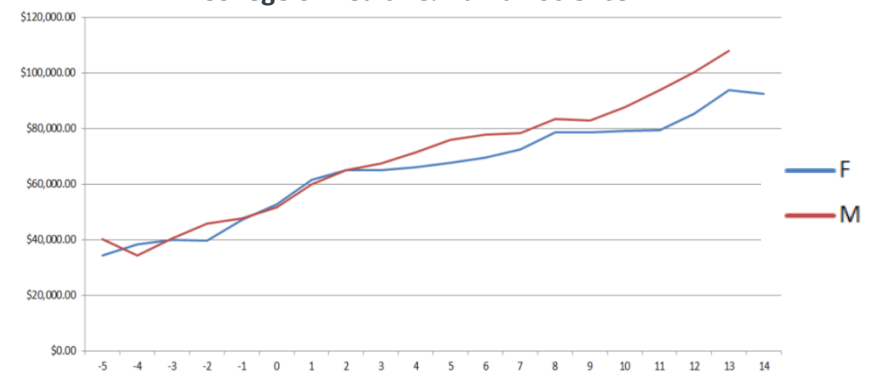
College of Law



College of Education



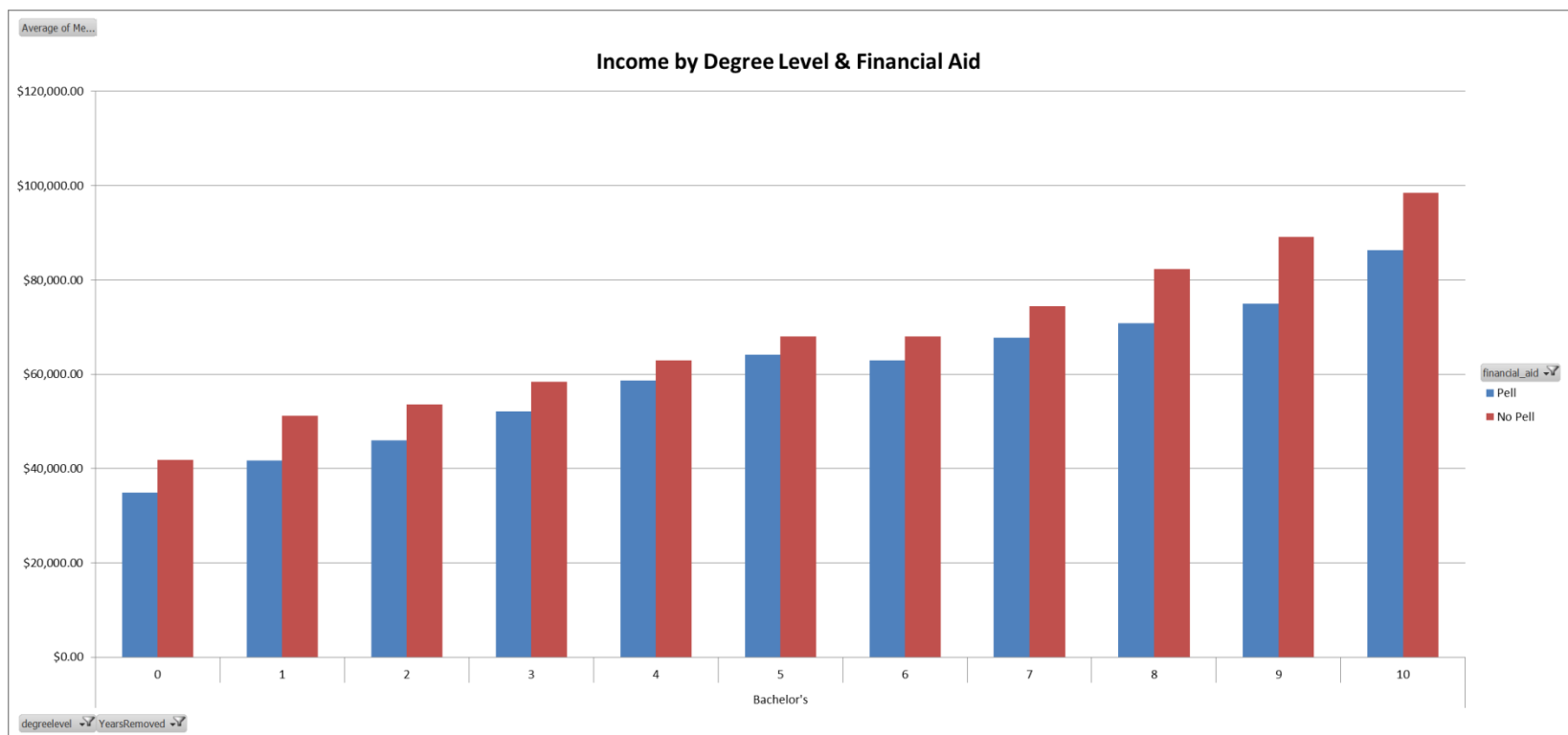
College of Health & Human Science





Plus

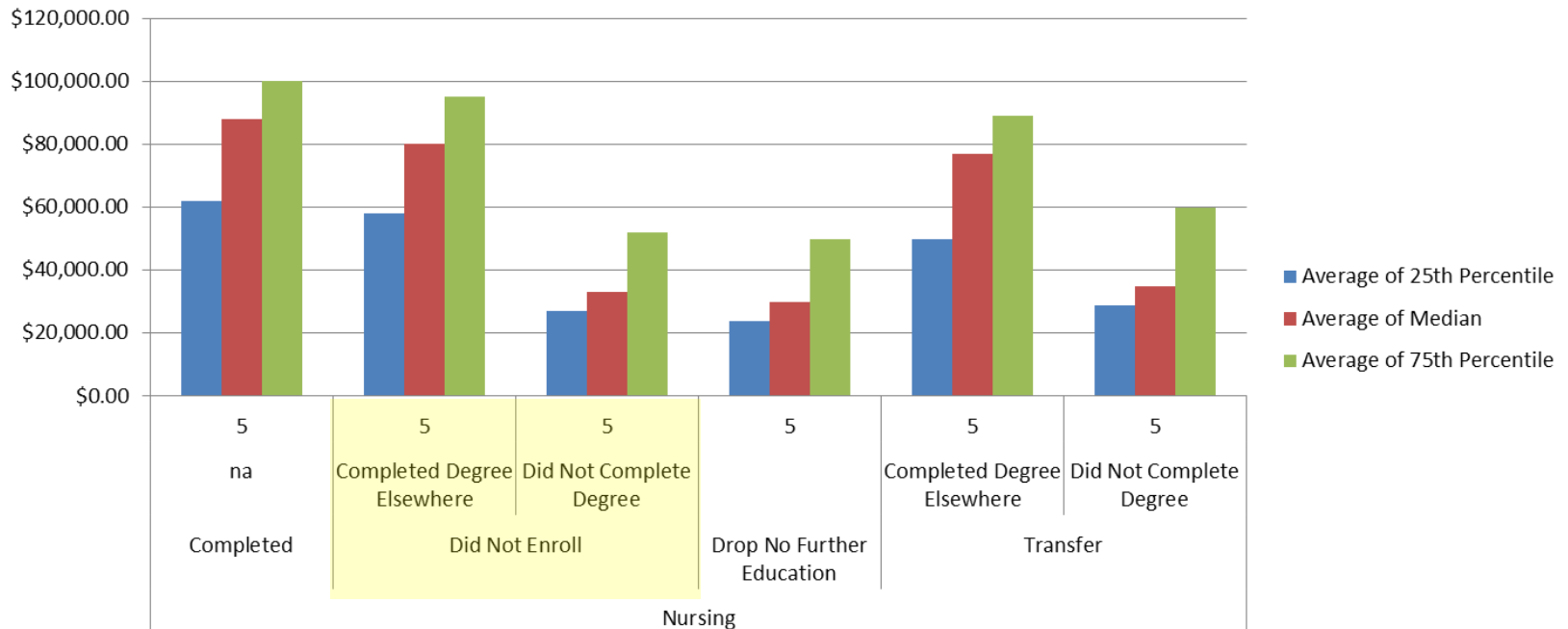
Income by Pell Grant





Education Metrics

Income by Program and Student Chosen Pathway Detail



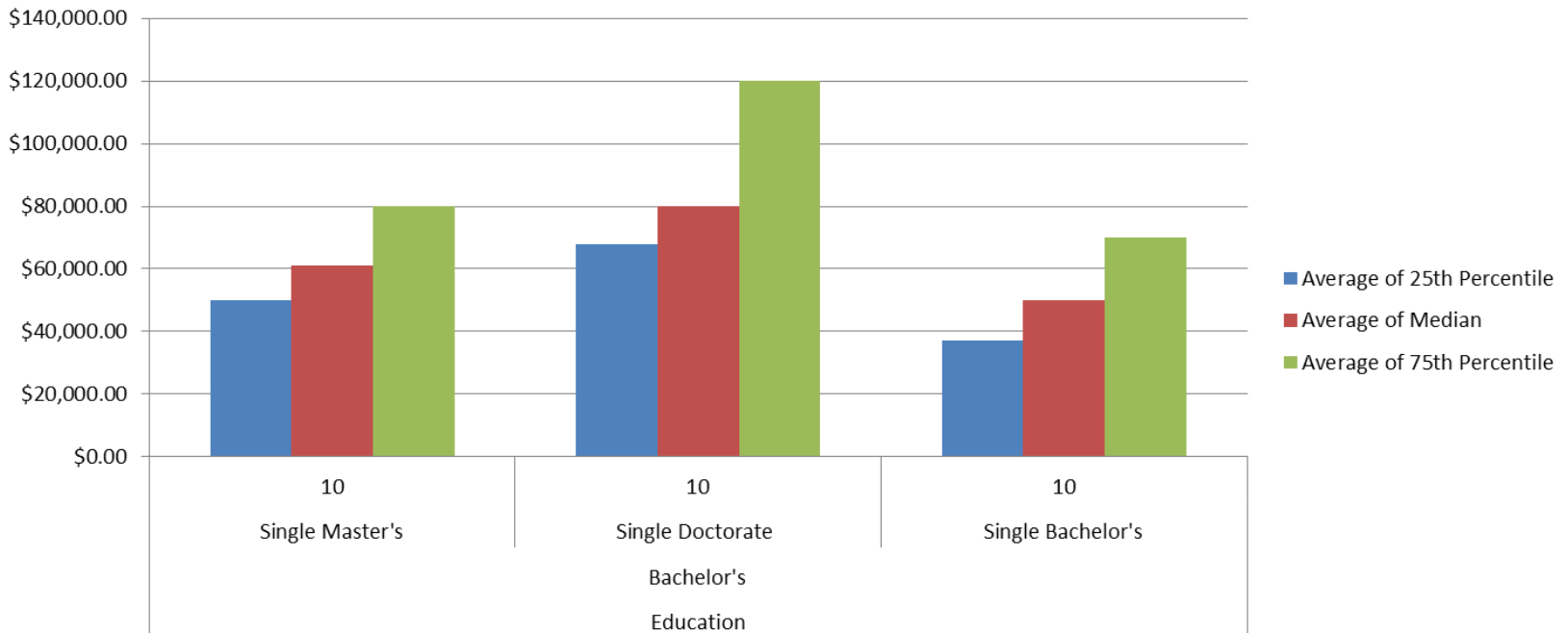
Key Insights:

- Nursing Students that transferred out of our program and completed their program elsewhere are earning \$11,000 less than our alumni 5 years post graduation.
- Those that applied to our Nursing Program and were accepted, yet declined and went on to complete their degree at another school are earning \$8,000 less 5 years post graduation.



Education Metrics

Income by Degree Level, Program and Highest Degree Level Earned



Key Insights:

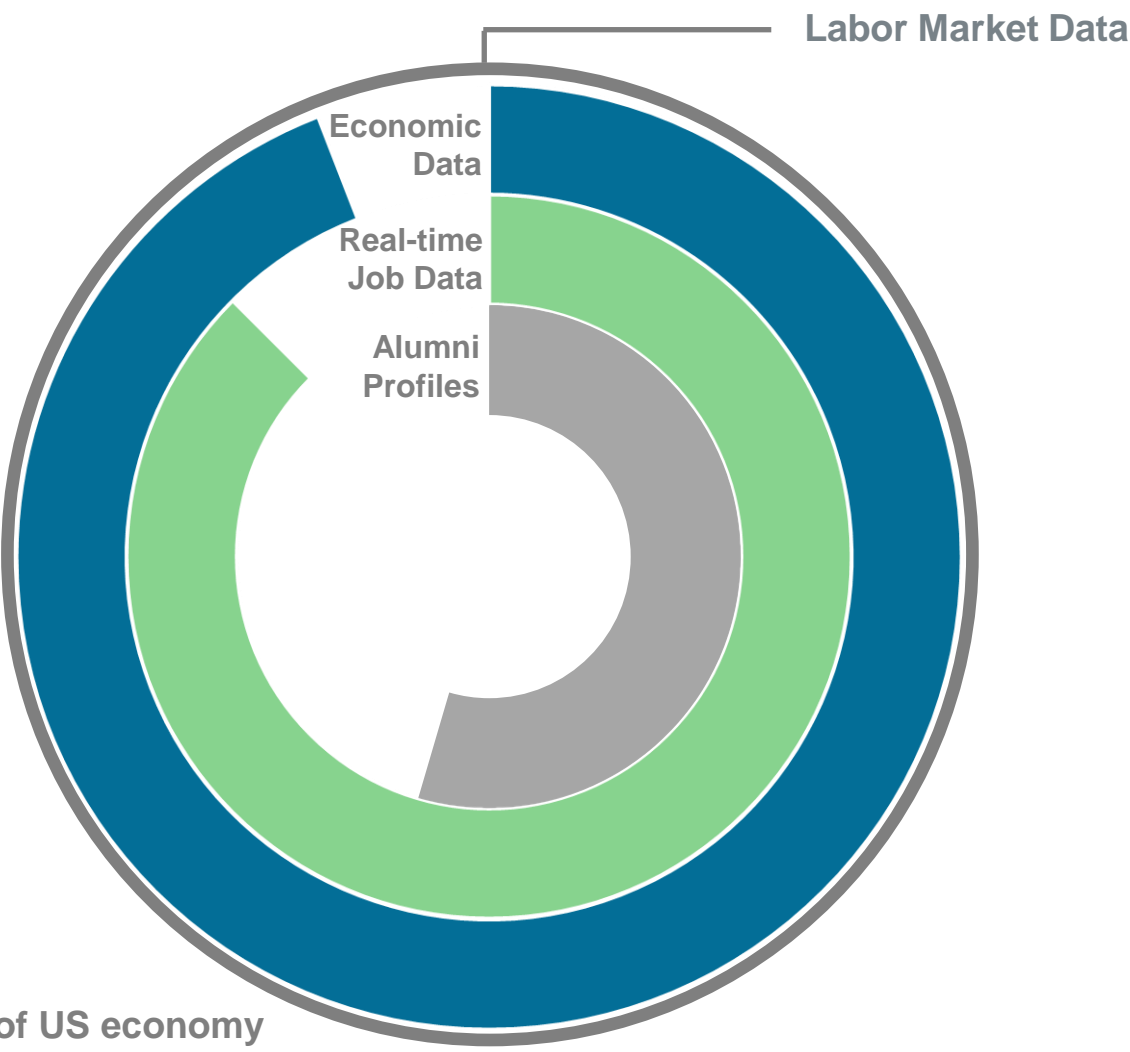
- Alumni that earned a Bachelor's degree in our Education program, but did not go on to earn a higher level degree 10 years post graduation are making a median income of \$50,000
- Alumni that went on to earn a Master's degree within the 10 years are now earning a median income of \$61,000.
- Alumni that went on to earn a Doctorate level degree within the next 10 years are now earning a median income of \$80,000.



Why Emsi

The Data Advantage

Emsi Data Insights



- 99% of US economy
- 220 million postings
- 125 million profiles



Our Data



18B
Data points



99%
of the U.S.
Workforce



50%+
Profiles of the
working
population in U.S.

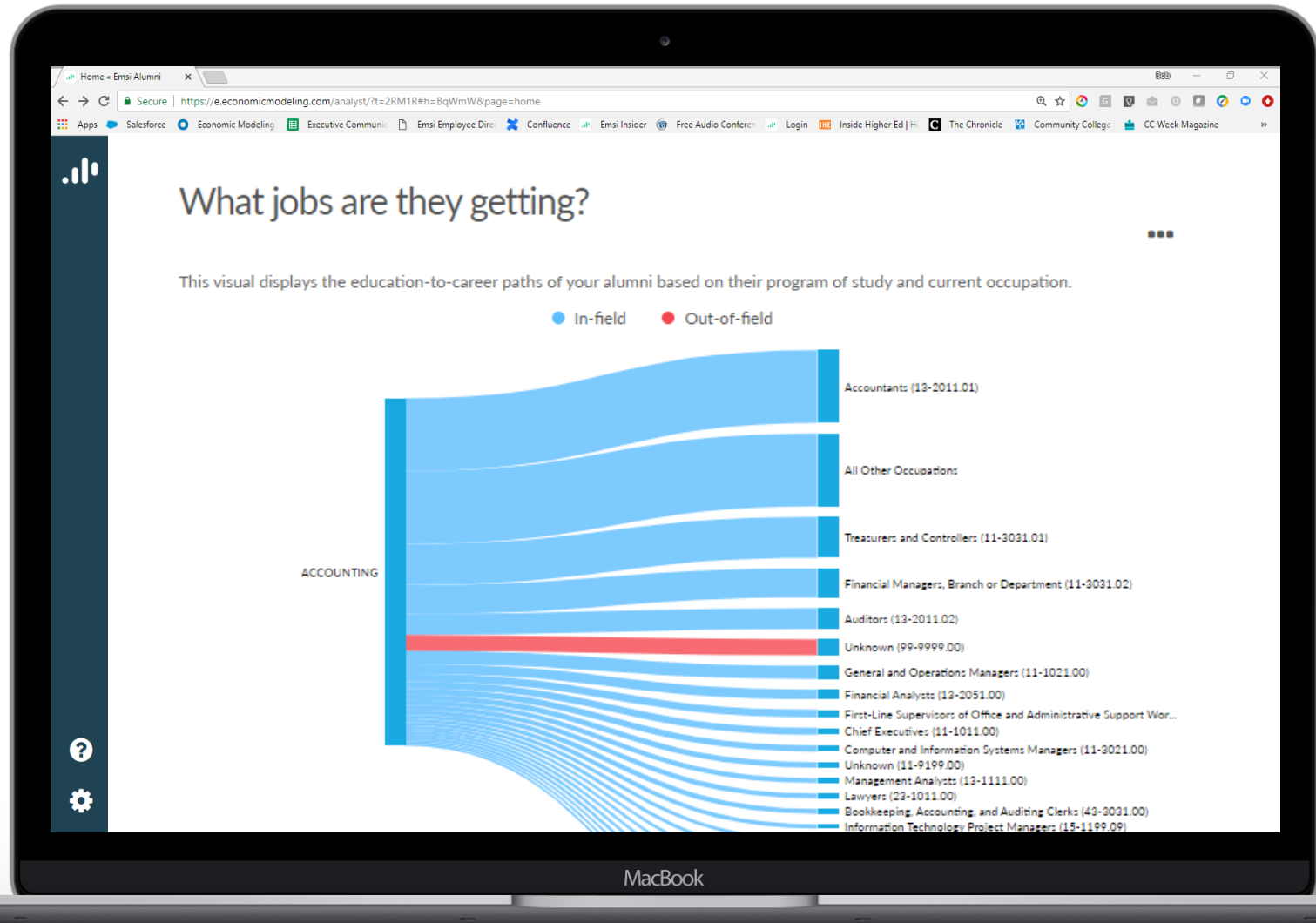


125M
Profiles with
employment
information

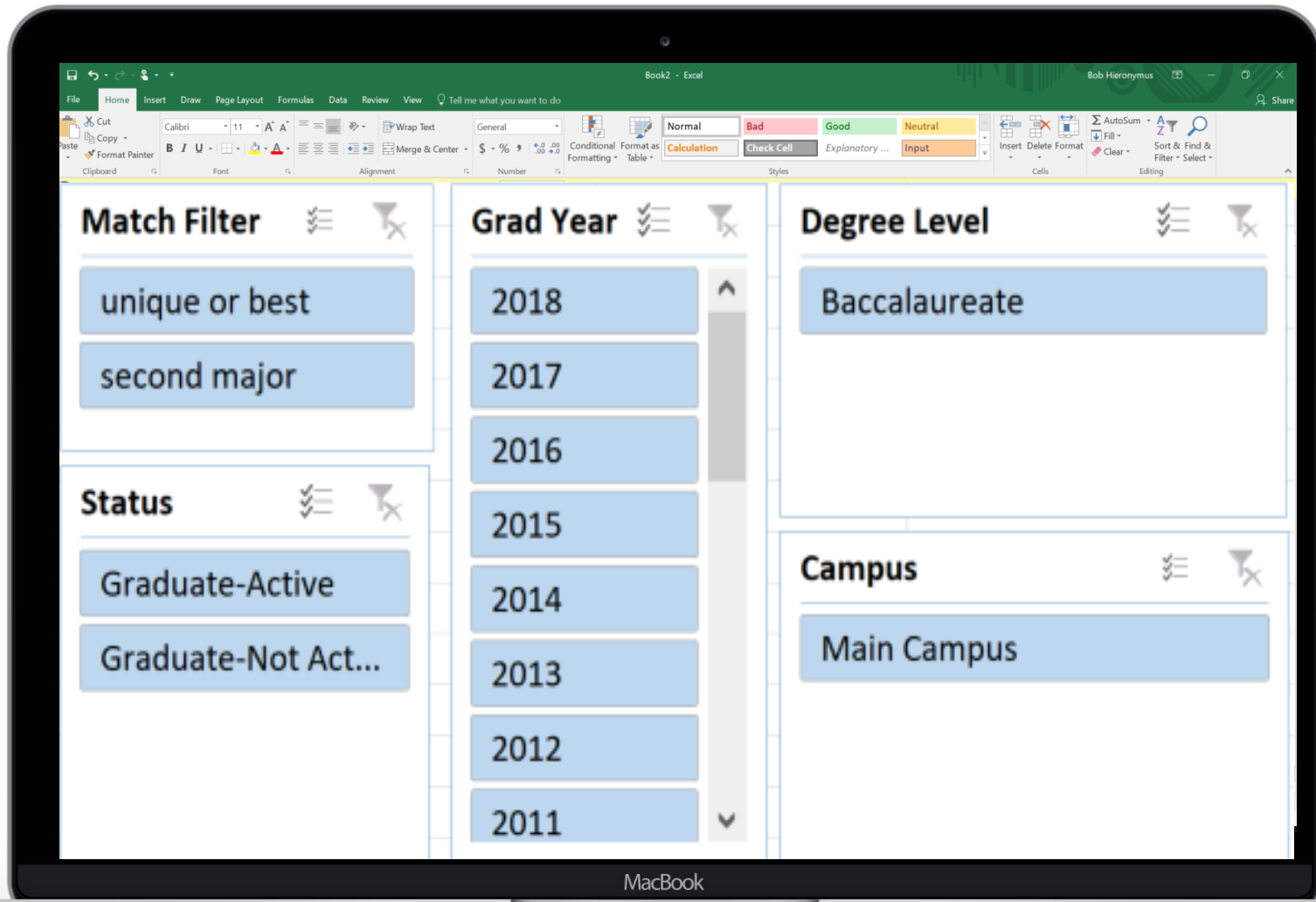


UPDATED
Quarterly

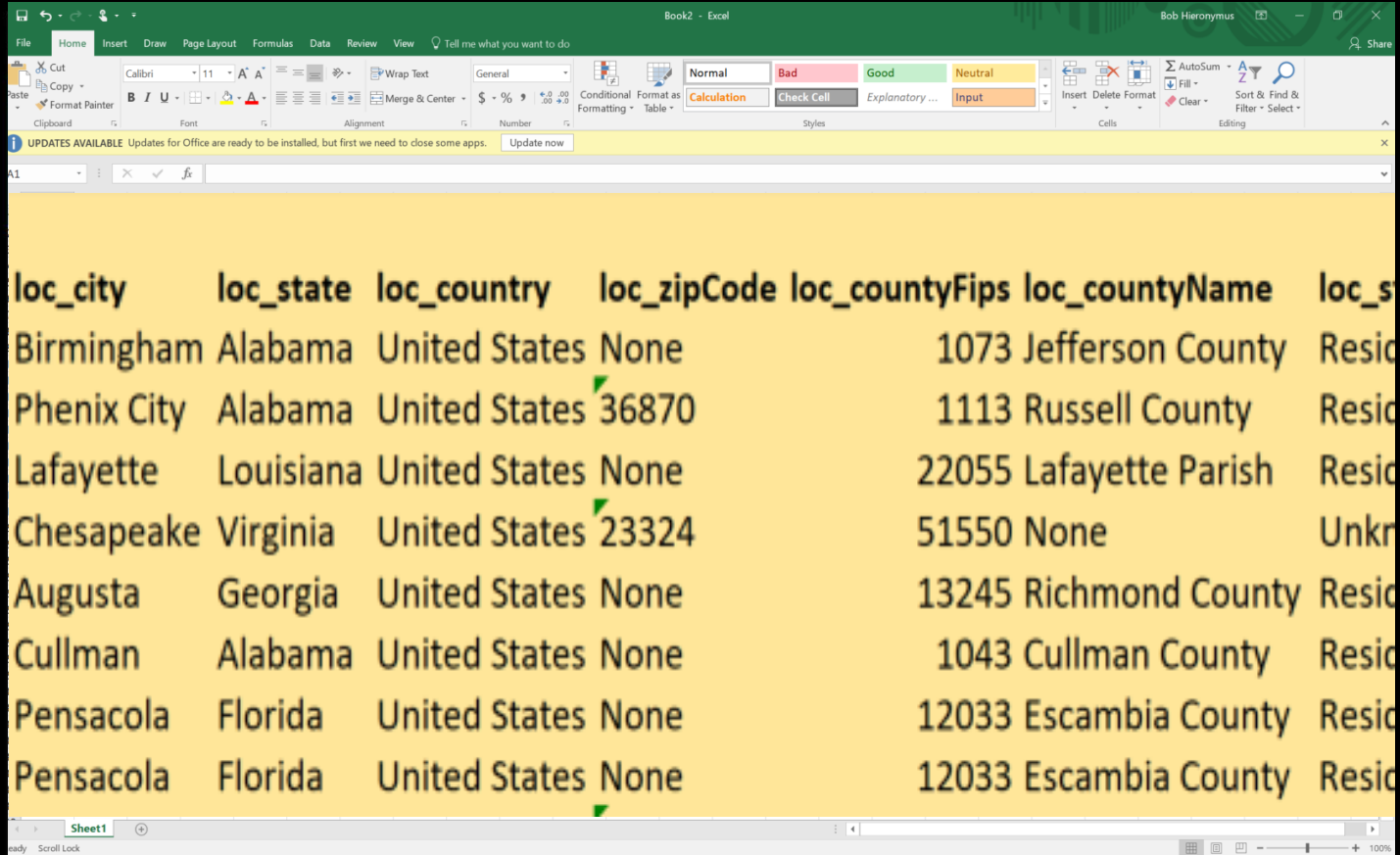
Alumni Outcomes Web Portal



Excel Pivot Table



CSV File with Raw Data



Book2 - Excel

File Home Insert Draw Page Layout Formulas Data Review View Tell me what you want to do

Clipboard Font Alignment Number Conditional Formatting Styles Cells Editing

Normal Bad Good Neutral Calculation Check Cell Explanatory ... Input

UPDATE AVAILABLE Updates for Office are ready to be installed, but first we need to close some apps. Update now

loc_city	loc_state	loc_country	loc_zipCode	loc_countyFips	loc_countyName	loc_s
Birmingham	Alabama	United States	None	1073	Jefferson County	Resid
Phenix City	Alabama	United States	36870	1113	Russell County	Resid
Lafayette	Louisiana	United States	None	22055	Lafayette Parish	Resid
Chesapeake	Virginia	United States	23324	51550	None	Unkn
Augusta	Georgia	United States	None	13245	Richmond County	Resid
Cullman	Alabama	United States	None	1043	Cullman County	Resid
Pensacola	Florida	United States	None	12033	Escambia County	Resid
Pensacola	Florida	United States	None	12033	Escambia County	Resid

Sheet1

Scroll Lock

MacBook



Market Metrics

Aggregated Reports Included:

1. Income by Institution, Program & Industry Subsector (NAICS3)
2. Income by Institution, Program & Industry Detail (NAICS6)
3. Income by Institution, Program, & Occupation Group (SOC2)
4. Income by Institution & Occupation Detail (SOC6)
5. Income by Institution, Program, & Employment Status (In-field/out of field)
6. Income by Institution & Top Employers

Record Level Alumni Data File (Emsi's Data Only):

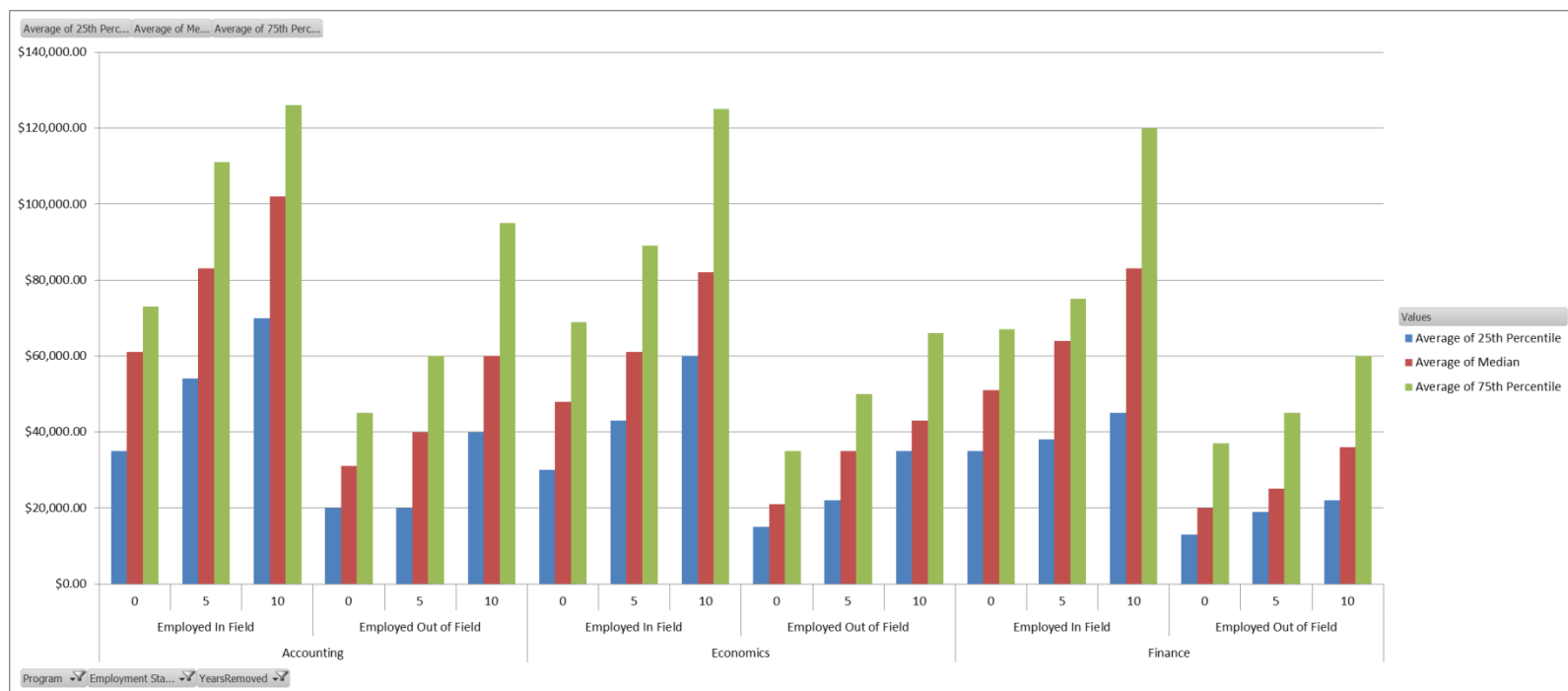
- Updated Contact Information – Emails, Phone #'s, Addresses
- Current Employer / Previous Employers
- Current Job Title / Previous Job Titles
- Occupation Details
- Industry Details
- Skills

Source:  **Emsi**



Market Metrics

Income by in- and out-of-field-of-study



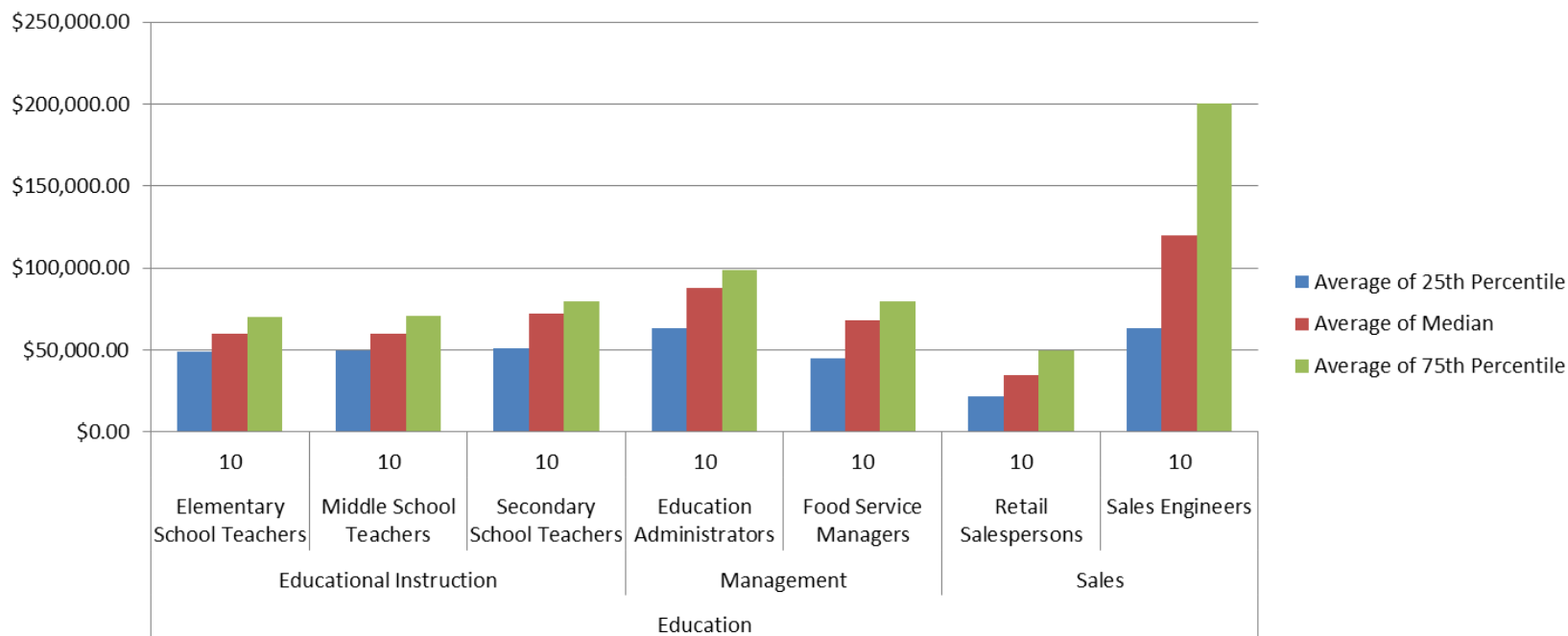
Key Insights:

- Working In-field *yields* higher incomes post graduation
- Accounting Majors out earn Economics and Finance Majors both in and out of field



Market Metrics

Income by Education Program and Occupation Group



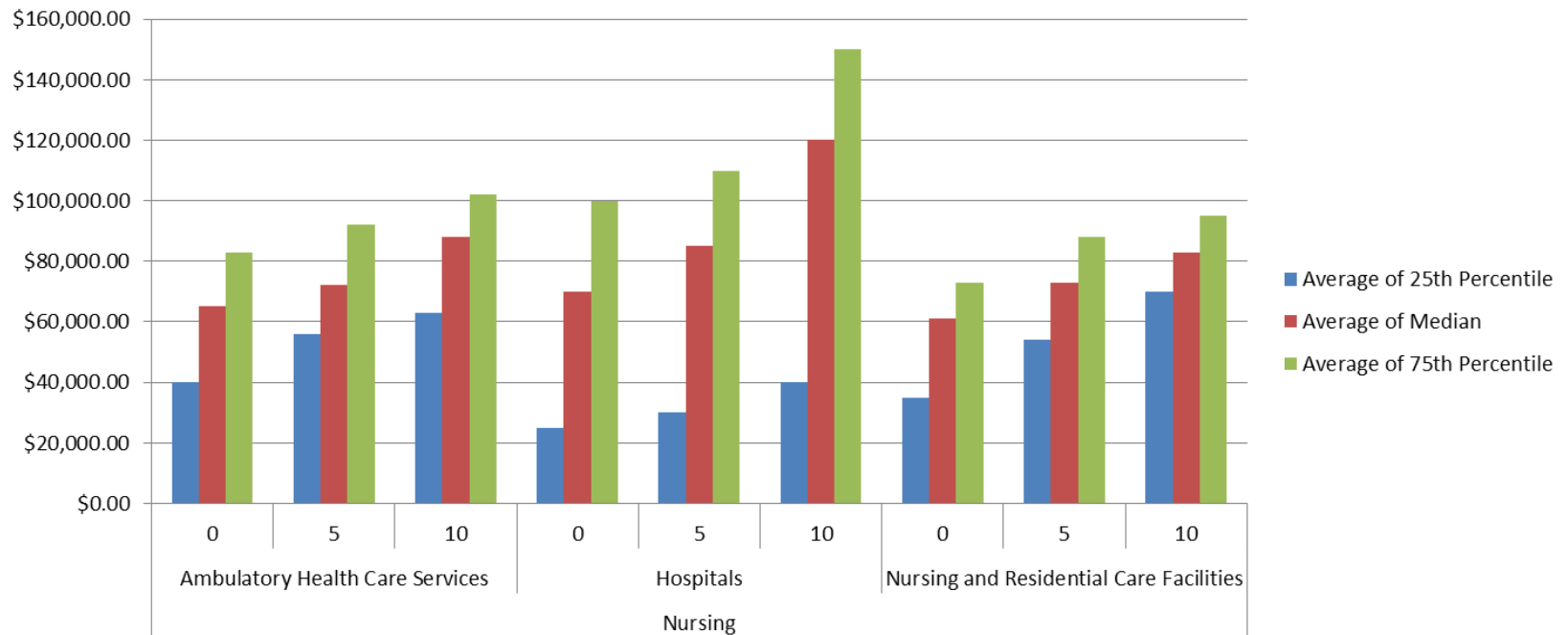
Key Insights:

- Education Graduates are working in Sales Occupations as Retail Salespersons and Sales Engineers, and Sales Engineers are earning \$85,000 more 10 years post graduation, skyrocketing the Sales Occupation earnings overall.
- Education Graduates working in Education Instruction are Elementary, Middle and Secondary Teachers, with Secondary Teachers earning higher incomes 10 years post graduation.



Market Metrics

Income by Nursing Program and Industry Subsector



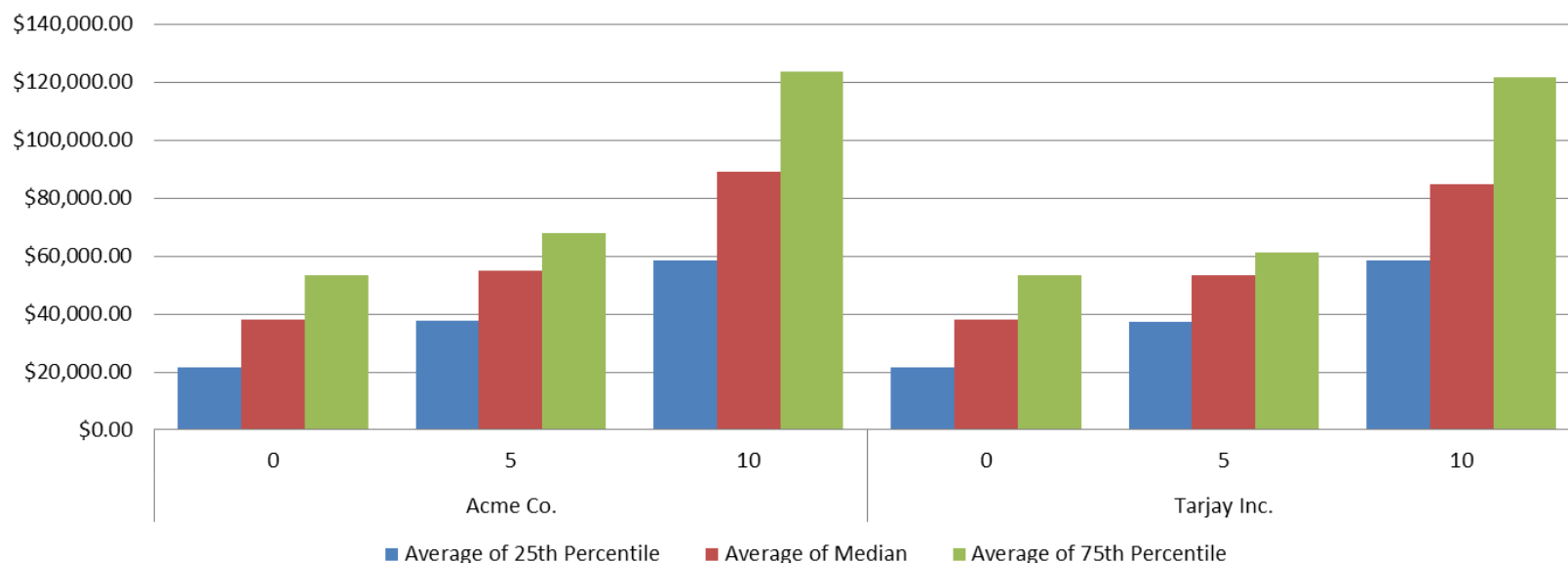
Key Insights:

- Nursing School Graduates working the Hospital industry earn \$13,000 more than those working in Ambulatory Health Care Services and \$12,000 more than those working the Nursing and Residential Care Facilities 5 years post graduation.



Market Metrics

Income by Top Employers



Key Insights:

- Acme Co. and Tarjay Inc. are top employers hiring our graduates.
- Our alumni earn \$38,000 their first year working for Acme and grow to \$89,000 ten years post graduation.
- Our alumni also earn \$38,000 their first year working at Tarjay Inc., and \$84,000 ten years post, a \$5,000 decrease from Acme's pay.

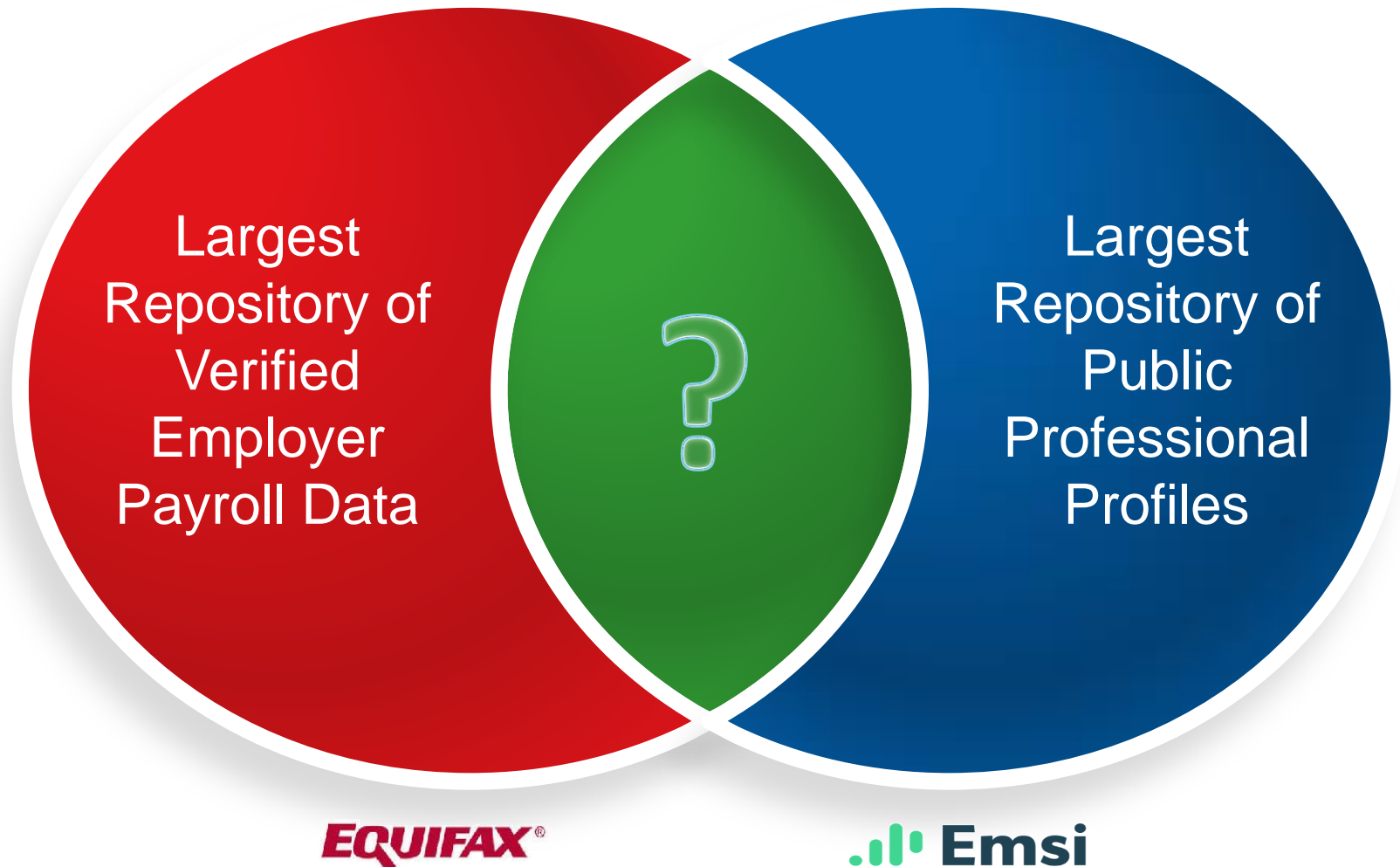


Case Study (UNCF)



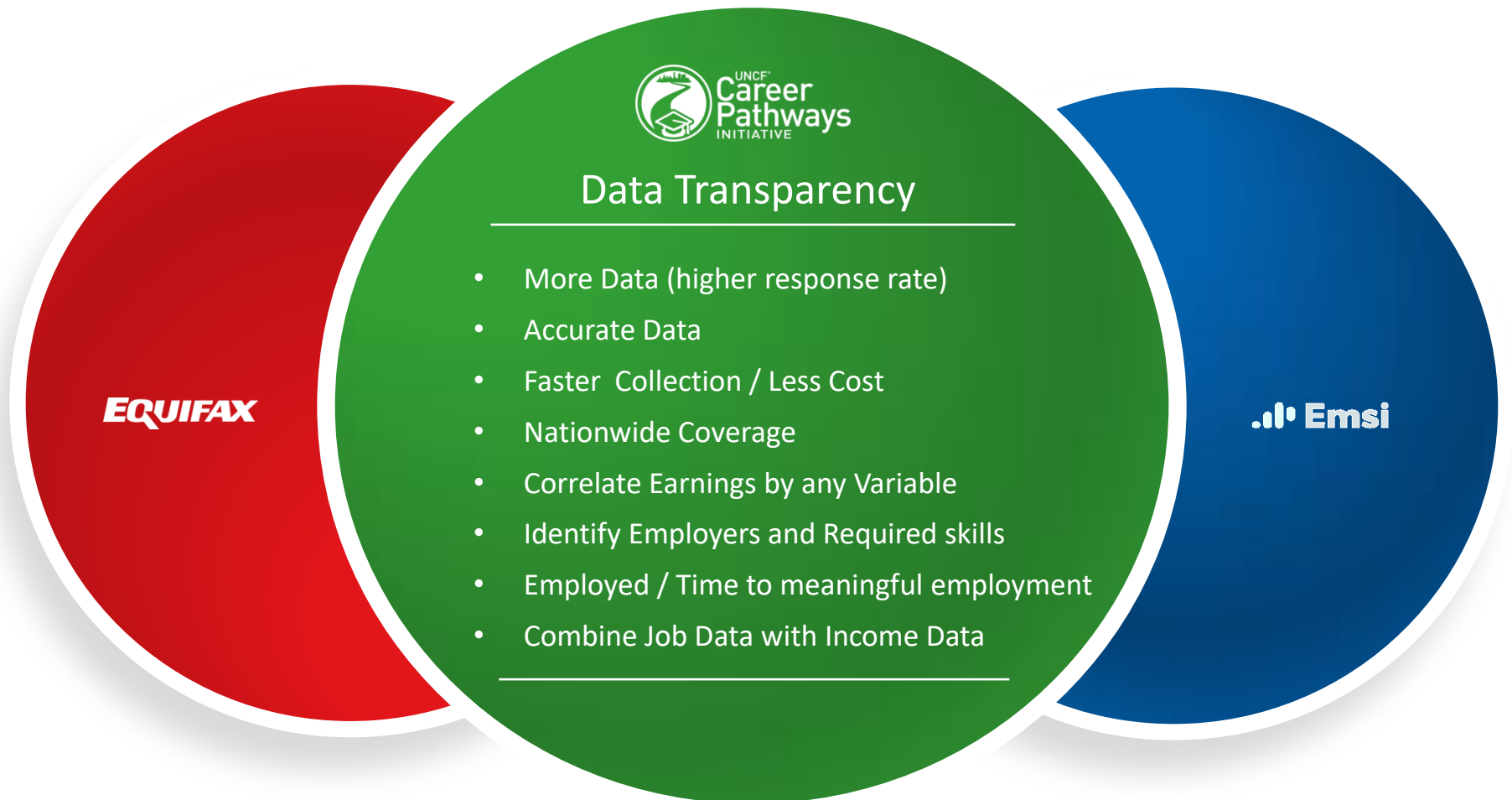


Data Synergy





Data Synergy





Student Data Submitted

Total Number of Institutions:

- 19

Total Number of Records:

- 53,011

Grad Years:

- 1990 - 2018

Degree Levels:

- Associate's
- Specialist
- Bachelor's
- Master's

Standardized College Names:

- College of Business
- College of Education
- College of Health and Human Services
- College of Humanities, Arts, and Social Sciences
- College of Professional and Continuing Studies
- College of Science, Technology, Engineering & Math
- General

Ethnicity

- Black or African American
- Hispanic or Latino
- White
- Nonresident Alien
- Unknown

Gender:

- Male
- Female

First Generation:

- Yes
- No
- Unknown

Pell Eligibility

- Yes
- No
- Unknown

of Programs / CIP Codes:

- 50

Delivery

EQUIFAX

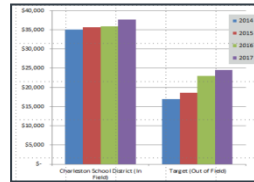


Emsi

Graduate Outcomes Metrics

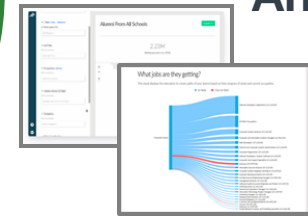


Combined Outcomes Analysis



Program Outcomes Match

Profile Analytics



Pivot tables and data including aggregated breakdown by income, industry and geography.

- All combination of variables
- 20 Year Perspective

Report and pivot table delivery combining both Emsi and Equifax data variables.

Record level reports and data on individual students.



Platform-based research tool with access to 125 million aggregated profiles.



Q&A / Next Steps

»»» Thank you!

